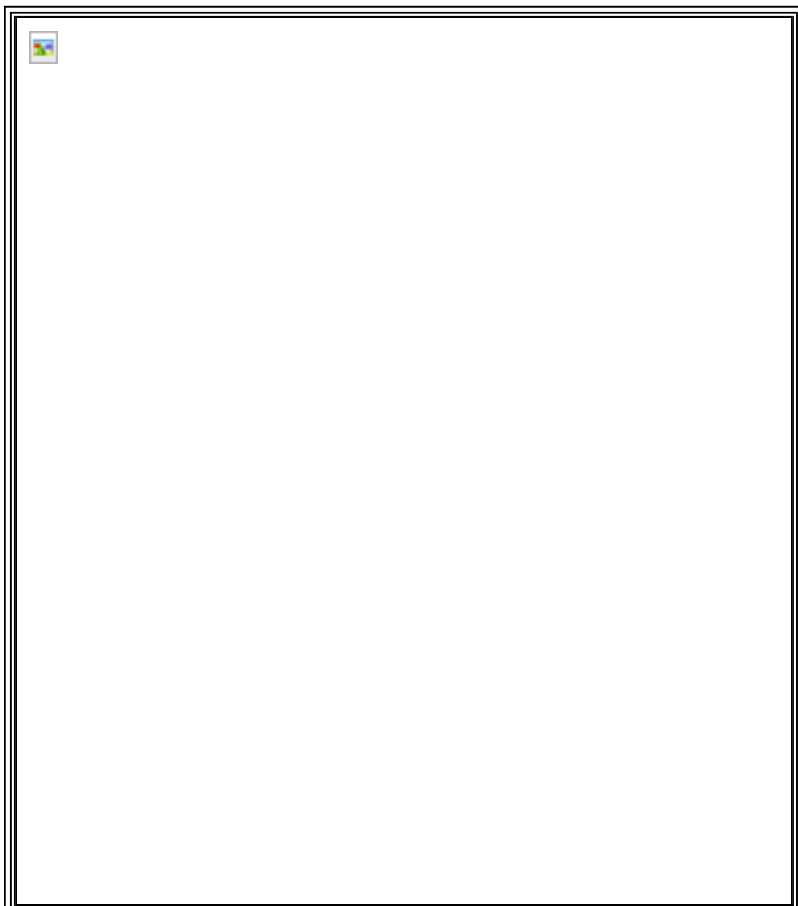


## 2006 CIVIC - Rear Brake Pad Inspection and Replacement (page 19-32) (Except R18A4 Engine)

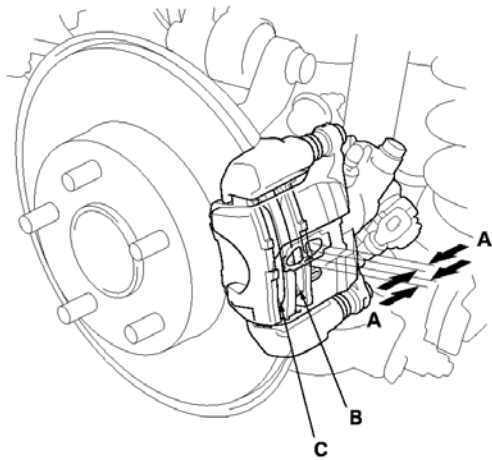


Frequent inhalation of brake pad dust, regardless of material composition, could be hazardous to your health.

- Avoid breathing dust particles.
- Never use an air hose or brush to clean brake assemblies. Use an OSHA-approved vacuum cleaner.

### Inspection

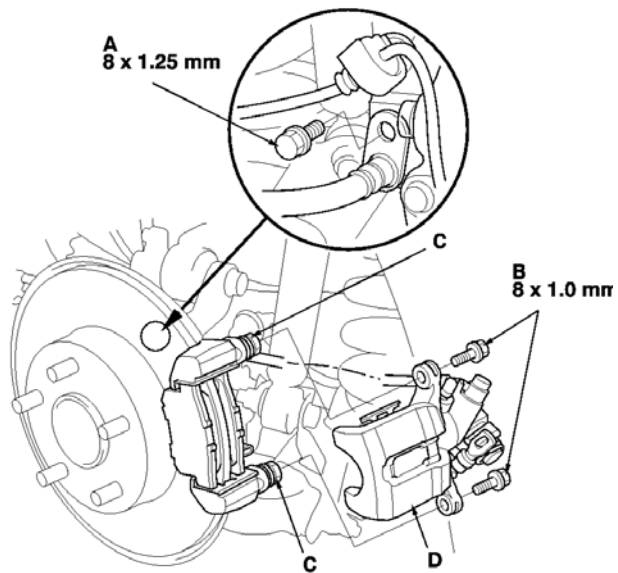
1. Raise the rear of the vehicle, and support it with safety stands in the proper locations.
2. Remove the rear wheels.
3. Check the thickness (A) of the inner pad (B) and the outer pad (C). Do not include the thickness of the backing plate.
  
4. If any part of the brake pad thickness is less than the service limit, replace the rear brake pads as a set.
5. Clean the mating surfaces between the brake disc and the inside of the wheel, then install the rear wheels.



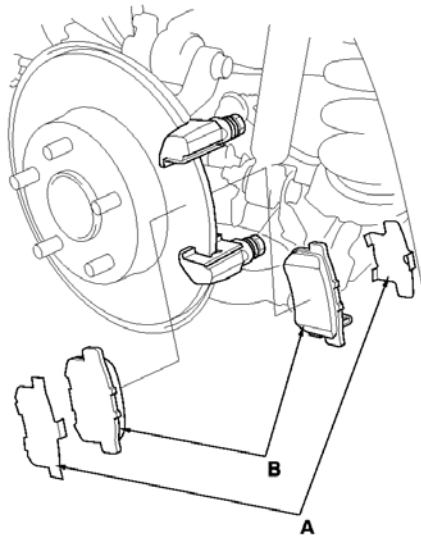
## Replacement

1. Remove some brake fluid from the master cylinder.
2. Raise the rear of the vehicle, and support it with safety stands in the proper locations.
3. Remove the rear wheels.
4. Remove the brake hose mounting bolt (A).
5. Remove the flange bolts (B) while holding respective caliper pin (C) with a wrench. Be careful not to damage the pin boot, and remove the caliper (D). Check the hose and pin boots for damage and deterioration.

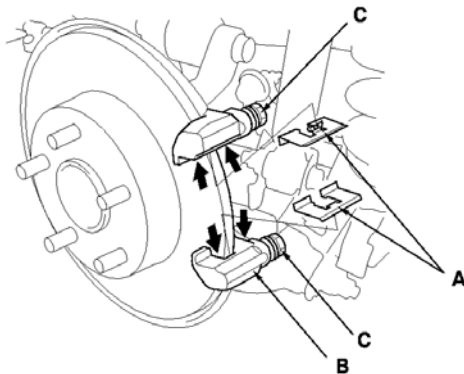
NOTE: Do not twist the brake hose and the parking brake cable to prevent damage.



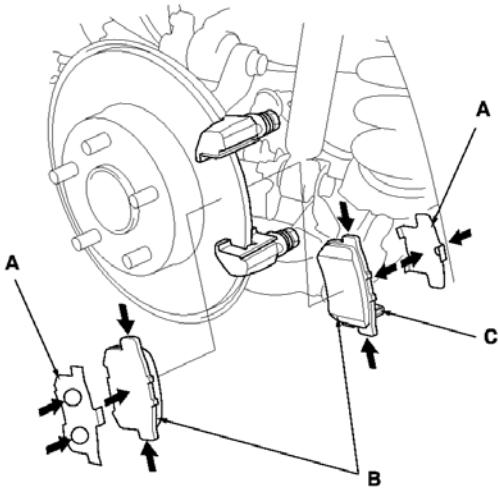
6. Remove the pad shims (A) and the brake pads (B).



7. Remove the pad retainers (A).
8. Clean the caliper bracket (B) thoroughly; remove any rust, and check for grooves and cracks. Verify that the caliper pins (C) move in and out smoothly. Clean and lube if needed.
9. Inspect the brake disc for runout, thickness, parallelism and check for damage and cracks.
10. Apply a thin coat of M-77 assembly paste (P/N 08798-9010) to the retainer mating surface of the caliper bracket (indicated by the arrows).
11. Install the pad retainers. Wipe excess assembly paste off the retainers. Keep the assembly paste off the brake disc and brake pads.



12. Apply a thin coat of M-77 assembly paste (P/N 08798-9010) to the pad side of the shims (A), the back of the brake pads (B), and the other areas indicated by the arrows. Wipe excess assembly paste off the pad shims and the brake pads friction material. Keep grease and assembly paste off the brake disc and the brake pads. Contaminated brake disc or brake pads reduce stopping ability.
13. Install the brake pads and the pad shims correctly. Install the brake pad with the wear indicator (C) on the bottom inside. If you are reusing the brake pads, always reinstall the brake pads in their original positions to prevent a momentary loss of braking efficiency.



14. Rotate the caliper piston (A) clockwise into the cylinder, then align the cutout (B) in the piston with the tab (C) on the inner pad by turning the piston back. Lubricate the boot with rubber grease to avoid twisting the piston boot. If the piston boot is twisted, back it out so it is positioned properly.

NOTE: Be careful when moving the piston back in the caliper; brake fluid might overflow from the master cylinder's reservoir. If brake fluid gets on any painted surface, wash it off immediately with water.

15. Install the caliper. Install the flange bolts (D), and tighten it to the specified torque while holding the respective caliper pin with a wrench being careful not to damage the pin boots.
16. Install the brake hose mounting bolt (E).
17. Clean the mating surfaces between the brake disc and the inside of the wheel, then install the rear wheels.
18. Press the brake pedal several times to make sure the brakes work.

NOTE: Engagement may require a greater pedal stroke immediately after the brake pads have been replaced as a set. Several applications of the brake pedal will restore the normal pedal stroke.

19. Add brake fluid as needed.
20. After installation, check for leaks at hose and line joints or connections, and retighten if necessary. Test-drive the vehicle, then recheck for leaks.

